

Ttl. No.	Part No.	Description	Qty. Rqd.
----------	----------	-------------	-----------

INJECTION EQUIPMENT

REMARKS LEGEND -

Engine (e) numbers:

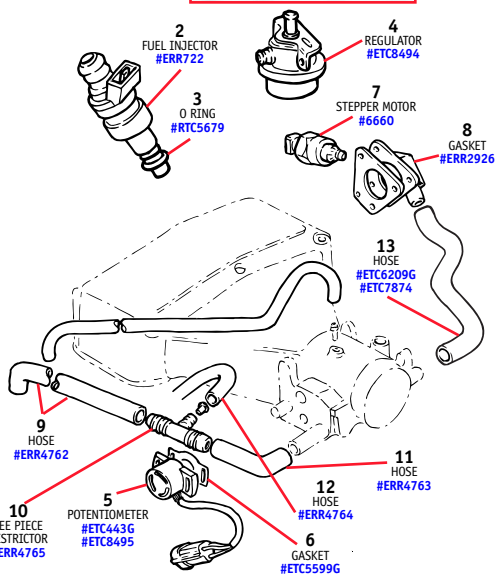
31D = 3.5 liter; 38D = 3.9 liter through 1992;
36D = 3.9 liter from 1993; 40D = 4.2 liter.

1	ERR722A	FUEL INJECTOR KIT, set of 8 injectors	1
2	ERR722	FUEL INJECTOR	8
3	RTC5679	O RING, fuel injector	16
4	ETC8494	REGULATOR, fuel pressure (e) 38D, 36D, 40D engines	1
5	ETC6443G	POTENTIOMETER, throttle position sensor (e) 31D engines	1
	ETC8495	POTENTIOMETER, throttle position sensor (e) 38D; 36D; up to (e) 40D13271B	1
6	ETC5599G	GASKET, potentiometer	1
7	ETC6660	STEPPER MOTOR, intake air control valve (e) 31D, 38D, 36D, up to (e) 40D13271B	1
8	ERR2926	GASKET, IACV housing (e) 40D engines	1
9	ERR4762	HOSE, flame trap to tee piece	1
10	ERR4765	TEE PIECE RESTRICTOR	1
11	ERR4763	HOSE, tee piece to plenum	1
12	ERR4764	HOSE, tee piece to manifold	1
13	ETC6209G	HOSE, I.A. control valve bypass (e) 31D engines	1
	ETC7874	HOSE, I.A. control valve bypass (e) 38D, 36D, 40D engines	1

Fuel Injectors, Regulator & Potentiometer



1 FUEL INJECTOR KIT
#ERR722A



Ttl. No.	Part No.	Description	Qty. Rqd.
----------	----------	-------------	-----------

EXHAUST SYSTEMS

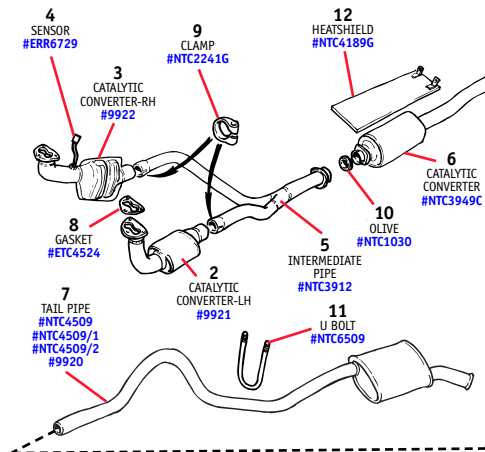
REMARKS LEGEND -

Vehicle i.d. (v) numbers:

JA = 1988 model year; KA = 1989 model year;
LA = 1990 model year.

1	9935	EXHAUST SYSTEM, complete kit, standard Up to (v) JA351032; includes catalytic converters, sensors, mufflers, pipes, heatshield, gaskets, olive and clamps	1
2	9921	CATALYTIC CONVERTER, LH front Up to (v) JA351032	1
3	9922	CATALYTIC CONVERTER, RH front Up to (v) JA351032	1
4	ERR6729	SENSOR, heated oxygen Up to (v) JA351032	1
5	NTC3912	INTERMEDIATE PIPE, standard Up to (v) JA351032	1
6	NTC3949C	CATALYTIC CONVERTER, centre Up to (v) JA351032	1
7	NTC4059	TAIL PIPE, one piece, standard Up to (v) JA351032	1
	9920	TAIL PIPE KIT, stainless Up to (v) JA351032	1
	NTC4059/1	TAIL PIPE, front section, stainless Up to (v) JA351032	1
	NTC4059/2	TAIL PIPE, rear section, stainless Up to (v) JA351032	1
8	ETC4524	GASKET, exhaust manifold to catalytic convtr. Up to (v) JA351032	2
9	NTC2241G	CLAMP, catalytic convtrs to intermediate pipe Up to (v) JA351032	2
10	NTC1030	OLIVE, intermediate pipe to centre pipe Up to (v) JA351032	1
11	NRC6509	U BOLT, tail pipe Up to (v) JA351032	2
12	NTC4189G	HEATSHIELD, exhaust Up to (v) JA351032	1

1 - Exhaust System Complete Kit #9935



Exhaust

Atlantic British should be your first and only source for exhaust parts for your Classic. We have everything from clamps to catalytic converters to complete systems. They are easily shipped, easily installed and easily the best performing exhausts you can buy. Our complete packages come with everything you need—pre-fitted and custom-manufactured for your Classic—so it fits right the first time. And both of the stainless steel exhausts offered here are guaranteed to last the life of your Rover!

Borla Performance Stainless Steel Exhaust



The best exhaust system you can buy for your Rover, for several reasons. Aircraft-quality T-304 stainless steel construction is lighter and stronger than conventional steel and is used inside and out (not just a stainless coating). It's fully welded without crimping for unimpeded flow-through, with slip-fit connectors for an easy, secure fit. Maintenance-free sound absorbing materials maintains low dBs, protects against burnout and reduces shell temperature. and each Borla exhaust is precision-tuned to your vehicle to actually improve engine performance. GUARANTEED for 1 million miles—the best in the business! Legal in all 50 states. It all adds up to make this the last exhaust system you'll ever buy for your Rover!

Range Rover Classic & LWB 90-95 (9926)

Falcon Performance Stainless Steel Exhaust

If you want a high-performance, stainless steel exhaust without the "high-performance" sound, the Falcon is your best choice. All Mandrel bends insure free flow of exhaust gases, with no backups or gaseous odors, and the top-quality stainless steel exterior is guaranteed for the life of your vehicle. The Falcon has it all: a quiet, high-performance, custom-fit stainless steel exhaust at a price less than the soft steel OEM system! Easily installed at your local garage.

Stainless Steel Exhaust '87-'88 (9920)

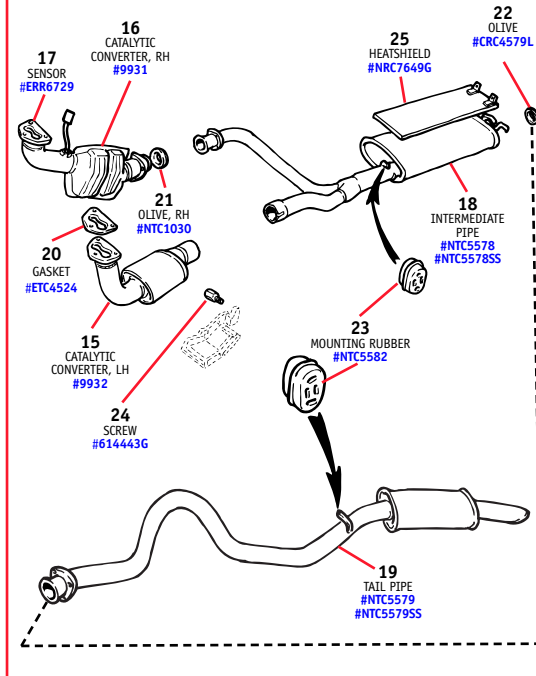
Stainless Steel Exhaust '89 (9930)

Stainless Steel Exhaust '90-'95 (9940)



Ill. No.	Part No.	Description	Qty. Rqd.
----------	----------	-------------	-----------

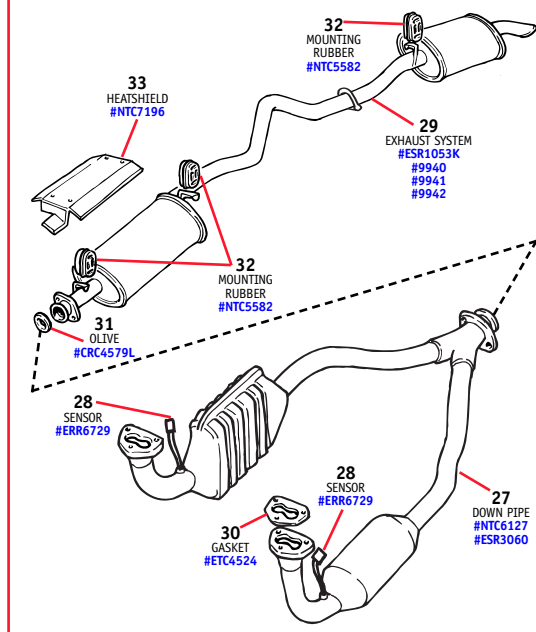
13 - Standard Exhaust System 1989 Complete Kit #9936



13	9936	EXHAUST SYSTEM, complete kit, standard <i>From (v) KA351033 to KA399972; includes catalytic converters, sensors, mufflers, pipes, hangers, heatshield, gaskets and clamp</i>	1
14	9929	EXHAUST SYSTEM, standard <i>From (v) KA351033 to KA399972</i>	1
	9930	EXHAUST SYSTEM, stainless <i>From (v) KA351033 to KA399972</i>	1
15	9932	CATALYTIC CONVERTER, LH <i>From (v) KA351033 to KA399972</i>	1
16	9931	CATALYTIC CONVERTER, RH <i>From (v) KA351033 to KA399972</i>	1
17	ERR6729	SENSOR, heated oxygen <i>From (v) KA351033 to KA399972</i>	2
18	NTC5578	INTERMEDIATE PIPE, standard <i>From (v) KA351033 to KA399972</i>	1
	NTC5578SS	INTERMEDIATE PIPE, stainless <i>From (v) KA351033 to KA399972</i>	1
19	NTC5579	TAIL PIPE, standard <i>From (v) KA351033 to KA399972</i>	1
	NTC5579SS	TAIL PIPE, stainless <i>From (v) KA351033 to KA399972</i>	1
20	ETC4524	GASKET, exhaust manifold to catalytic convtr. <i>From (v) KA351033 to KA399972</i>	2
21	NTC1030	OLIVE, RH catalytic convtr. to intermediate pipe <i>From (v) KA351033 to KA399972</i>	1
22	CRC4579L	OLIVE, intermediate pipe to tail pipe <i>From (v) KA351033 to KA399972</i>	1
23	NTC5582	MOUNTING RUBBER <i>From (v) KA351033 to KA399972</i>	2

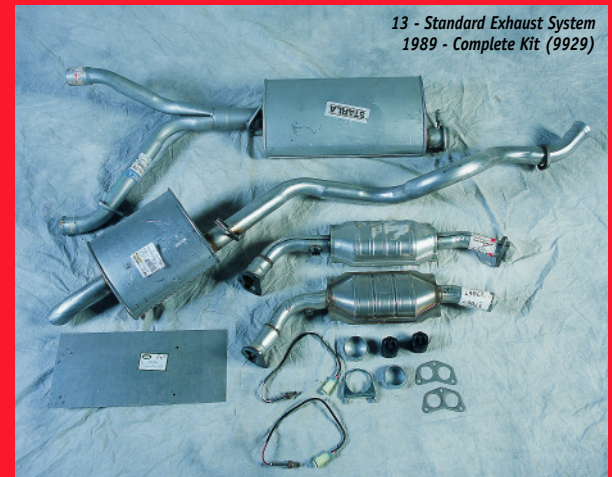
Ill. No.	Part No.	Description	Qty. Rqd.
----------	----------	-------------	-----------

26 - Standard Exhaust System 1990-1995 Complete Kit #9938



24	614443G	SCREW, special, starter motor heatshield <i>From (v) KA351033 to KA399972</i>	1
25	NRC7649G	HEATSHIELD, exhaust <i>From (v) KA351033 to KA399972</i>	1
26	9938	EXHAUST SYSTEM, complete kit, standard <i>From (v) LA399973 on; includes sensors, mufflers, pipes, olive, gaskets, hangers, heatshield, clamp. Pipes not include downpipe.</i>	1
27	NTC6127	DOWN PIPE, with catalytic converters <i>From (v) LA399973 on; not LWB</i>	1
	ESR3060	DOWN PIPE, with catalytic converters <i>From (v) LA399973 on; LWB only</i>	1
28	ERR6729	SENSOR, heated oxygen <i>From (v) LA399973 on</i>	2
29	ESR1053K	EXHAUST SYSTEM, one piece, incl. clamps <i>From (v) LA399973 on</i>	1
	9940	EXHAUST SYSTEM, one piece, stainless <i>From (v) LA399973 on</i>	1
	9941	INTERMEDIATE PIPE, stainless <i>From (v) LA399973 on</i>	1
	9942	TAIL PIPE, stainless <i>From (v) LA399973 on</i>	1
30	ETC4524	GASKET, exhaust manifold to catalytic convtr. <i>From (v) LA399973 on</i>	2
31	CRC4579L	OLIVE, down pipe to exhaust system <i>From (v) LA399973 on</i>	1
32	NTC5582	MOUNTING RUBBER <i>From (v) LA399973 on</i>	3
33	NTC7196	HEATSHIELD, exhaust	1

PRICES SUBJECT TO CHANGE.
Call for the Latest Pricing and Availability.



13 - Standard Exhaust System 1989 - Complete Kit (9929)

Exhaust System Packages

No more worries if you have all the parts to do the job! We have done all the work of getting all the pieces you need to do the job. No more hunting for the right size clamp or, wondering if the parts work together. Plus you save by buying all the parts together.

Standard Cat-Back Exhaust

'89 Standard Exhaust System (9929)

Includes: 1 Muffler Intermediate, 1 Muffler & Tailpipe Rear, 2 Olive - Exhaust, 1 Muffler Clamp - Heavy Duty, Exhaust Olive

'90-'95 Standard Exhaust System (ESR1053K)

Includes: 1 Exhaust System Standard, 2 Exhaust Clamp

'87-'88 Standard Exhaust Rear (NTC4059)

Includes: 1 Rear Muffler & Tailpipe Assembly

Exhaust System Packages

'87-'88 Exhaust Package (9935)

Includes: 1 Catalytic Converter - RH, 1 Catalytic Converter - LH, 2 Oxygen Sensors, 1 Catalytic Center, 1 Muffler - Tail Pipe, 1 Y-Pipe, 2 Gaskets, 1 Olive, 3 Exhaust Clamps

'89 Exhaust Package (9936)

Includes: 1 Catalytic Converter - RH, 1 Catalytic Converter - LH, 2 Oxygen Sensors, 2 Olive, 1 Intermediate Muffler, 1 Muffler - Tail Pipe, 2 Rubber Hangers, 1 Heat shield, 2 Gaskets, 1 Exhaust Clamp

'90 on Exhaust Package (9938)

Includes: 1 Y-Pipe, 2 Oxygen Sensors, 1 Olive, 2 Gaskets - Down pipe, 1 Muffler - Tail Pipe, 3 Rubber Hangers, 1 Heat shield, 1 Exhaust Clamp



26 Standard Exhaust System 1990 On - Complete Kit (9938)

